

Multifunction Calibrator of alternating and direct voltage and current



The C101F Calibrator enables generating direct (DC) and alternating (AC) voltages up to 1100V in five subranges 0,1-1-10-100-1000V, DC and AC currents up to 20,5A in five subranges 0,001-0,01-0,1-1-10A (the C101FC option up to 100A AC). Frequency of alternating signals may be chosen from values 50Hz (synchronized with power supply frequency), 60Hz, 400Hz or can be programmed in range 45,00...2000Hz. Output signal can be set by means of external keyboard or by standard interface RS232C from PC computers.

The C101F Calibrator is characterised by high accuracy, high output power, small dimensions and light weight.

C101F

C100F DC and AC Voltage and Current Multifunction Calibrator

- Voltage source up to 1100V
- Current source up to 20A
- Small dimensions and light weight – 13kg
- High output power
- Option C101FC with 100A AC subrange
- Option C101FB with 40VA power at 20A AC/DC
- Interface RS232C
- Software Calpro 101

TECHNICAL PARAMETERS OF C101F CALIBRATOR

Parameter	Range									
	100mV	1V	10V	100V	1000V	1mA	10mA	100mA	1A	10A
Resolution	100nV	1µV	10µV	100µV	1mV	1nA	10nA	100nA	1µA	10µA
Settings range	1... 205mV	0,01... 2,05V	0,1... 20,5V	1... 205V	10... 1100V	0,01... 2,05mA	0,1... 20,5mA	1... 205mA	0,01... 1,1A	0,1... 20,5A
Accuracy *)	DC		0,02 +0,002		0,02 +0,003		0,03 +0,003		0,03 +0,003	
	AC		0,05 0,005+50µV		0,05 +0,005+0,5µA		0,05 +0,005		0,05 +0,005	
Maximum load	20mA	1100mA	150mA	20mA	11V	1V@20A				
Frequency	DC; 50Hz synchronized with power supply frequency; 60±0,01Hz and 400±0,1Hz 45,00...99,99±0,01Hz, 100,0...999,9±0,1Hz, 1000...2000±1Hz									
Temperature coefficient	0,1 permissible intrinsic error / 1°C for environment temperature +5...+40°C									
Weight and dimensions	13kg and 478 (width)x194 (height)x342 (depth) mm									
Power supply	230V ±10% / 50Hz ±5% / 120VA(C101F) / 200VA(C101FB, C101FC)									

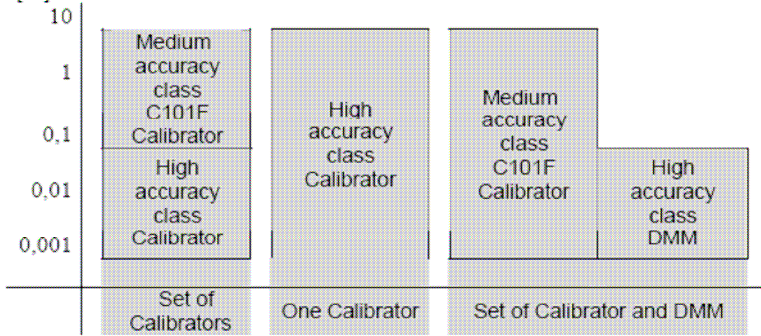
DC – direct voltage and current, AC – alternating voltage and current
 *) Limits of intrinsic error during 12-months from last calibration [±% of setting and ±% of setting range]

ADDITIONAL TECHNICAL PARAMETERS OF C101FB AND C101FC CALIBRATORS

Parameter / options	C101FB Option with increased output power. Connection of coil (100 turns Ø2,0) to calibrator's output enables checking clamp ammeters up to 1000 A		C101FC Option with additional 100A AC range	
	Maximum load of range	100V	200mA	100V
	1000V	30mA	1000V	30mA
	10A	2V@20A and 4V@10A	10A	2V@20A and 4V@10A
Range 100A AC	Settings range			1...100,0000A
	Resolution			100µA
	Accuracy			0,2% of setting+0,05% of range
	Maximum load			0,5V@100A i 0,8V@50A

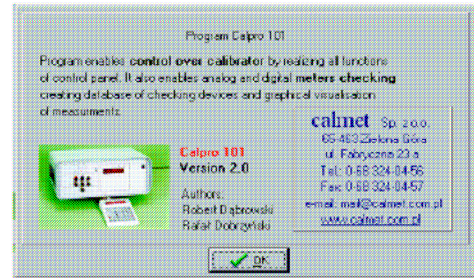
How do you choose calibration set for testing voltage and current meters?

Meter under test accuracy class [%]

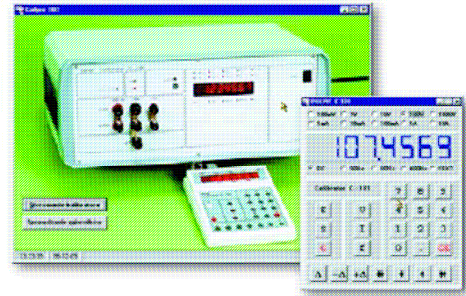


Set of medium accuracy Calibrator and high accuracy DMM are a low cost and more versatility solution

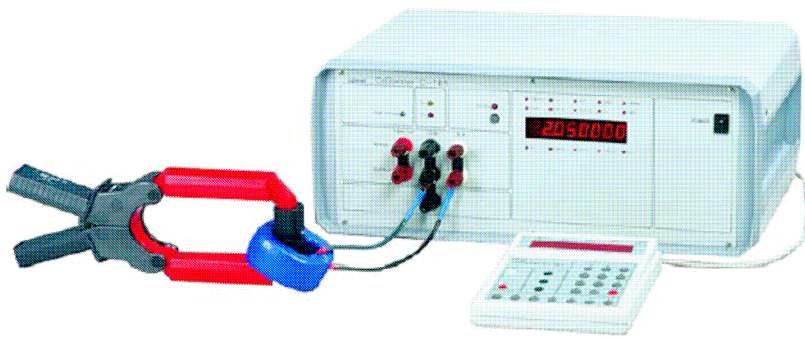
SOFTWARE CALPRO 101



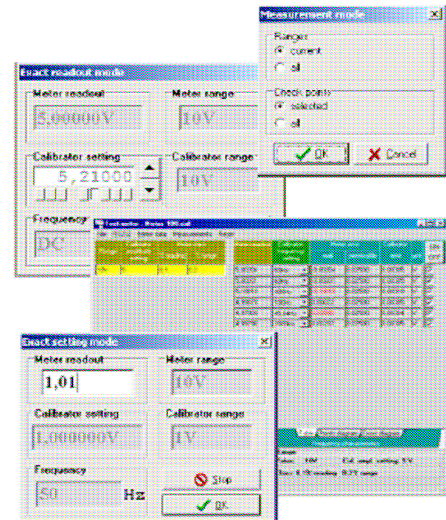
- simulation of calibrator's keyboard by means of PC computer



- computer-aided analog and digital devices testing – measurement procedures, editing tables of measurements with automatic errors calculation of testing devices, creating database



Set for checking DC and AC clamp meters



- graphical visualisation of measurements in the form of tables and various charts

